

# Sea-Dweller

Oyster, 43 mm, Oystersteel

**The Oyster Perpetual  
Sea-Dweller in  
Oystersteel with a  
Cerachrom bezel insert  
in black ceramic and an  
Oyster bracelet.**



CERAMIC BEZEL AND LUMINESCENT DISPLAY

## Legendary divers' watch

The 60-minute graduated, unidirectional rotatable bezel of the Sea-Dweller enables divers to precisely and safely monitor their dive and decompression times.

It is equipped with a patented black Cerachrom bezel insert manufactured by Rolex in a virtually scratchproof ceramic whose colour is unaffected by ultraviolet rays. The graduation is coated via PVD (Physical Vapour Deposition) with a thin layer of platinum. The dial features large Chromalight hour markers and hands, filled with luminescent

material that emits a long-lasting blue glow for excellent legibility in dark conditions.



INTENSE BLACK DIAL

## Inspired by the original

The black dial of the Sea-Dweller has the large hands and indices reserved for Rolex professional models. The dial bears the name Sea-Dweller in red, a reference to the first model.

The innovative Chromalight display on the dial pushes back the boundaries of visibility in dark environments. Its distinctive blue glow lasts up to eight hours with a uniform luminosity, practically twice as long as that of standard luminescent materials.

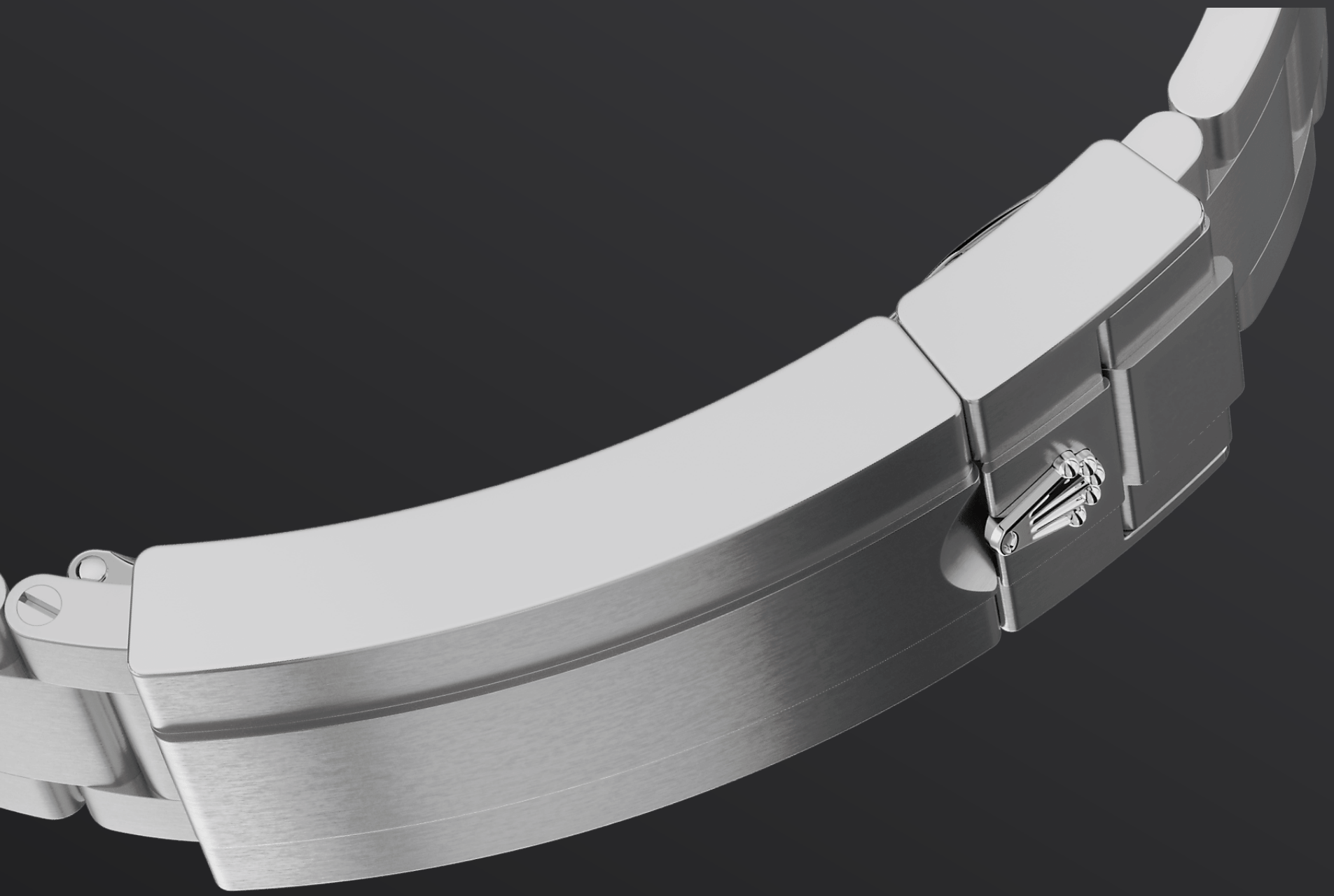


OYSTERSTEEL

## Highly resistant to corrosion

Rolex uses Oystersteel for its steel watch cases. Specially developed by the brand, Oystersteel belongs to the 904L steel family, alloys most commonly used in high-technology and in the aerospace and chemical industries, where maximum resistance to corrosion is essential.

Oystersteel is extremely resistant, offers an exceptional finish once polished and maintains its beauty even in the harshest environments.



THE OYSTER BRACELET

# Alchemy of form and function

The Oyster bracelet is a perfect alchemy of form and function, aesthetics and technology, designed to be both robust and comfortable.

It is equipped with an Oysterlock clasp, which prevents accidental opening, and an ingenious Glidelock, allowing fine adjustments of the bracelet without using any tools — and allowing it to be worn comfortably over a diving suit.

# More technical details

## Sea-Dweller

Reference 126600

### Model Case

---

**Type**

Oyster, 43 mm, Oystersteel

**Diameter**

43 mm

**Material**

Oystersteel

**Bezel**

Unidirectional rotatable 60-minute graduated, scratch-resistant Cerachrom insert in black ceramic, numerals and graduations coated in platinum

**Oyster Architecture**

Monobloc middle case, screw-down case back and winding crown

**Winding Crown**

Screw-down, Triplock triple waterproofness system

**Crystal**

Scratch-resistant sapphire, Cyclops lens over the date

**Water Resistance**

Waterproof to 1,220 metres / 4,000 feet, helium escape valve

### Movement

---

**Type**

Perpetual, mechanical, self-winding

**Calibre**

3235, Manufacture Rolex

**Precision**

-2/+2 sec/day, after casing

**Oscillator**

Paramagnetic blue Parachrom hairspring. High-performance Paraflex shock absorbers

**Winding**

Bidirectional self-winding via Perpetual rotor

**Power reserve**

Approximately 70 hours

**Functions**

Centre hour, minute and seconds hands. Instantaneous date with rapid setting. Stop-seconds for precise time setting

**Bracelet**

---

**Type**

Oyster, three-piece solid links

**Clasp**

Folding Oysterlock safety clasp with Rolex Glidelock extension system

**Bracelet Material**

Oystersteel

**Dial**

---

**Type**

Intense black

**Details**

Highly legible Chromalight display with long-lasting blue luminescence

**Certification**

---

**Type**

Superlative Chronometer (COSC + Rolex certification after casing)

# Explore and discover more on Rolex.com

**All intellectual property rights such as trademarks, service marks, trade names, designs and copyrights are reserved.**

Nothing contained in this website may be reproduced without written permission. Rolex reserves the right at all times to modify the models featured in the present website.

