



# Yacht-Master 37

Oyster, 37 mm, Oystersteel and platinum

**The Oyster Perpetual  
Yacht-Master 37 in  
Oystersteel and  
platinum with an Oyster  
bracelet.**



BIDIRECTIONAL ROTATABLE BEZEL

## Timing the distance

The Yacht-Master's bidirectional rotatable 60-minute graduated bezel is made entirely from precious metals or fitted with a Cerachrom insert in high-tech ceramic. The raised polished numerals and graduations stand out clearly against a matt, sand-blasted background.

This functional bezel – which allows the wearer to calculate, for example, the sailing time between two buoys – is also a key component in the model's distinctive visual identity.



SLATE DIAL

## Exceptional legibility

Like all Rolex Professional watches, the Yacht-Master 37 offers exceptional legibility in all circumstances, and especially in the dark, thanks to its Chromalight display.

The broad hands and hour markers in simple shapes – triangles, circles, rectangles – are filled with a luminescent material emitting a long-lasting glow.

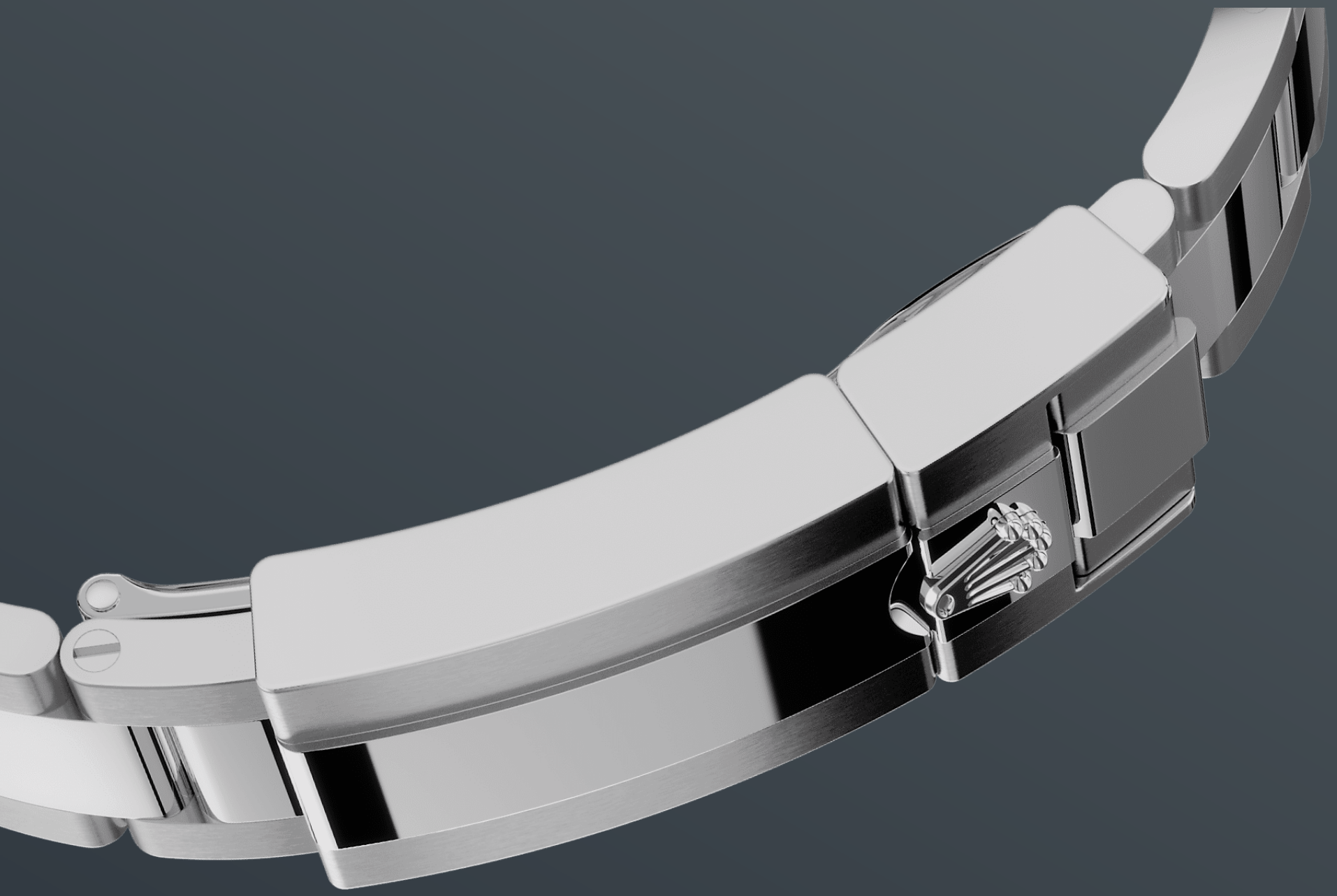


ROLESIIUM

## A legendary combination

Many Rolex watches are available with the now-legendary combination of yellow, white or Everose gold and steel known as Rolesor, but Rolesium is a creation specific to the Yacht-Master.

While the case and bracelet are in rugged Oystersteel, the bezel of the Rolesium versions is made of platinum, imparting a silvery whiteness and vibrant luminosity for an unmistakable sense of luxury.



THE OYSTER BRACELET

## Alchemy of form and function

The Oyster bracelet is a perfect alchemy of form and function, aesthetics and technology, designed to be both robust and comfortable. It is equipped with an Oysterlock folding clasp, which prevents accidental opening and the Easylink comfort extension link, also exclusive to Rolex.

This ingenious system allows the wearer to increase the bracelet length by approximately 5

mm, providing additional comfort in any circumstance.

# More technical details

## Yacht-Master

Reference 268622

### Model Case

---

#### Type

Oyster, 37 mm, Oystersteel and platinum

#### Diameter

37 mm

#### Material

Rolesium

#### Bezel

950 platinum bidirectional rotatable 60-minute graduated with raised numerals

#### Oyster Architecture

Monobloc middle case, screw-down case back and winding crown

#### Winding Crown

Screw-down, Triplock triple waterproofness system

#### Crystal

Scratch-resistant sapphire, Cyclops lens over the date

#### Water Resistance

Waterproof to 100 metres / 330 feet

### Movement

---

#### Type

Perpetual, mechanical, self-winding

#### Calibre

2236, Manufacture Rolex

#### Precision

-2/+2 sec/day, after casing

#### Oscillator

Syloxi hairspring in silicon with patented geometry. High-performance Paraflex shock absorbers



### **Winding**

Bidirectional self-winding via Perpetual rotor

### **Power reserve**

Approximately 55 hours

### **Functions**

Centre hour, minute and seconds hands. Instantaneous date with rapid setting. Stop-seconds for precise time setting

## **Bracelet**

---

### **Type**

Oyster, three-piece solid links

### **Bracelet Material**

Oystersteel

### **Clasp**

Folding Oysterlock safety clasp with Easylink 5 mm comfort extension link

## **Dial**

---

### **Type**

Slate

### **Details**

Highly legible Chromalight display with long-lasting blue luminescence

## **Certification**

---

### **Type**

Superlative Chronometer (COSC + Rolex certification after casing)

# Explore and discover more on Rolex.com

**All intellectual property rights such as trademarks, service marks, trade names, designs and copyrights are reserved.**

Nothing contained in this website may be reproduced without written permission. Rolex reserves the right at all times to modify the models featured in the present website.

